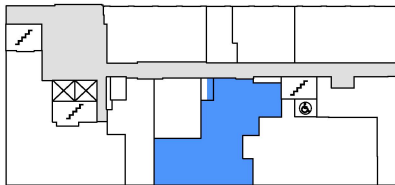
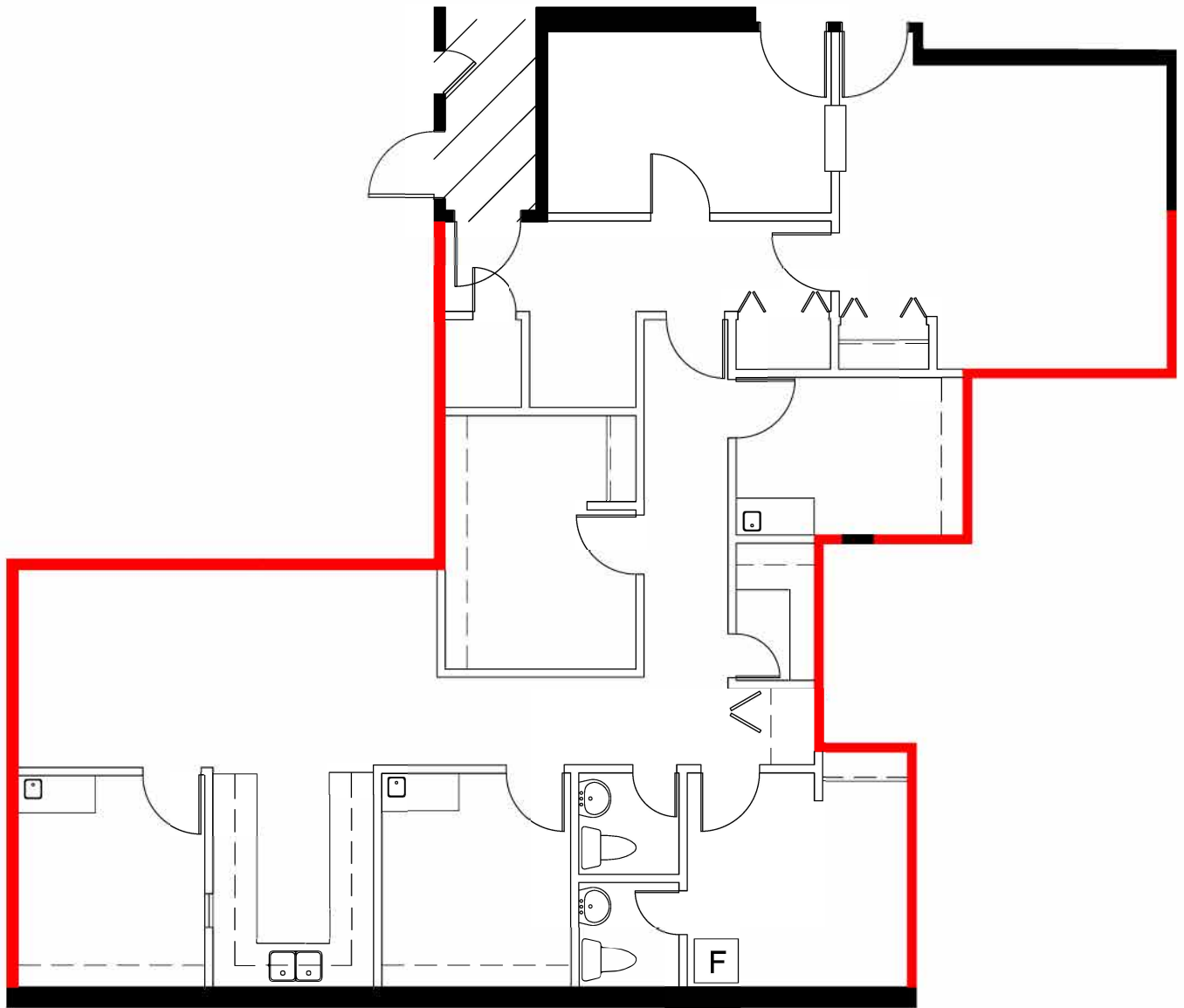
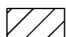



FLOOR PLAN



-  AREA ASSIGNED TO 105 & 107 (50-50 %)
-  DEMISING WALL



APPROXIMATE NORTH
© 2025 Space Database Inc. All Rights Reserved



PROJECT NAME
**DAVISVILLE MEDICAL
DENTAL CENTRE**
1849 YONGE STREET
TORONTO, ONTARIO

DRAWING NAME
SUITE 107
1,593 SF.
AS PER ANSI/BOMA Z65.1 1996

SCALE
AS NOTED

DATE
SEPTEMBER 04 2025

DRAWING NO.
M107